

## Testing for dissociated resistance in staphylococci

A detailed explanation of constitutive and inducible resistance is given in the following chapter on the BSAC website:

### Interpretative reading: recognizing the unusual and inferring resistance mechanisms from resistance phenotypes

David M. Livermore <sup>a</sup>, Trevor G. Winstanley <sup>b</sup> and Kevin P. Shannon <sup>c</sup>

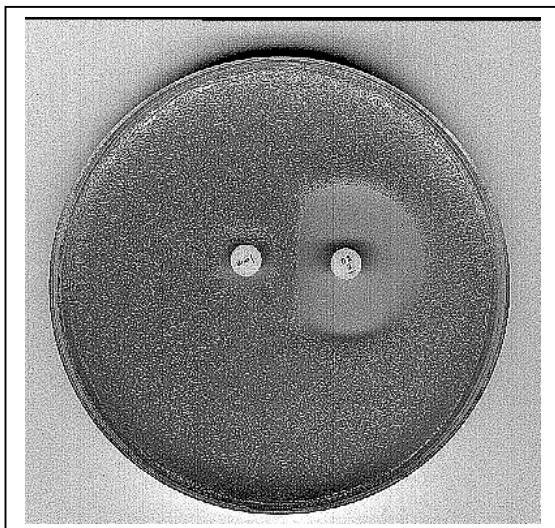
<sup>a</sup> Antibiotic Resistance Monitoring and Reference Laboratory, Specialist & Reference Microbiology Division, Health Protection Agency, 61 Colindale Avenue, London NW9 5HT; <sup>b</sup> Department of Microbiology, Royal Hallamshire Hospital, Glossop Road, Sheffield S10 2JF; <sup>c</sup> Department of Infection, Guy's and St. Thomas' School of Medicine, King's College London, St. Thomas' Hospital, London SE1 7EH.

### MLS<sub>B</sub> resistance: Interpretation of susceptibility testing results

Erythromycin	Clindamycin	Interpretation
S	S	Type 1: Organism susceptible to both erythromycin and clindamycin
R	R	Type 2: Organism resistant to erythromycin and clindamycin (constitutive MLS <sub>B</sub> )
R	S	Type 3: May have inducible resistance (inducible MLS <sub>B</sub> )

Detection of inducible MLS<sub>B</sub> resistance in isolates susceptible to clindamycin, but resistant to erythromycin:

1. Inoculate an ISA plate with a suspension of organism to give semi-confluent growth (see BSAC Disc Diffusion Method for Antimicrobial Susceptibility testing).
2. Place a 5 µg erythromycin disc and a 2 µg clindamycin disc 1.5 cm apart in the centre of the plate.
3. Incubate at 35-37°C for 18-20 h.
4. Examine the zones of inhibition for blunting as shown below.



#### Organisms exhibiting blunting

Isolate has MLS<sub>B</sub> and clindamycin should be used with caution (if at all).

NB.

Disc on the left 5 µg erythromycin, disc on right 2 µg clindamycin